

DAILY RESEARCH, 24 JULI 2020

PT PROFINDO SEKURITAS INDONESIA

**GD PERMATA KUNINGAN LT 19
JL KUNINGAN MULIA KAV 9C GUNTUR SETIABUDI JAKARTA SELATAN 12980**

TELP +62 21 8378 0888

EMAIL : CUSTOMERSERVICE@PROFINDO.COM

WWW.PROFINDO.COM | PROCLICK.PROFINDO.COM

MARKET MOVERS



Bursa saham DOW ditutup melemah setelah rilis data klaim pengangguran AS meningkat 1,42 Juta orang lebih tinggi 100,000 dari minggu sebelumnya ditengah kasus Corvid 19 yang terus meningkat. **DOW -1.31%, S&P -1.23%, NASDAQ -2.29%**

Bursa saham Inggris ditutup menguat setelah rilis kinerja perusahaan lebih baik dari perkiraan ditengah kasus Corvid 19 yang meningkat. **Indeks DAX -0.01%, FTSE +0.07%, CAC -0.07%**

Bursa Saham Asia dibuka melemah seiring ketegangan Politik US China dan rilis data apengangguran AS yang meningkat diatas ekspektasi. **Hang Seng +0.82%, KOSPI -0.09%, Nikkei +-0.58%**

Harga minyak mentah dunia menguat tipis ditengah rilis data pengangguran AS yang meningkat dan ketegangan Geopolitik AS China. Harga emas ditutup melemah setelah berhasil kembali mencetak rekor tertinggi. **WTI +0.17%, Brent Oil +0.12%, Gold -0.28%.**

IHSG pada perdagangan hari ini diperkirakan akan **BEARISH** dengan Range pergerakan **5020-5162** dengan saham-saham yang dapat diperhatikan : **INDY BBNI SMBR MAIN PTPP MNCN**

MARET DATA

AMERIKA

DOW 30	26,652.33	-353.51	-1.31%
S&P 500	3,235.66	-40.36	-1.23%
NASDAQ	10,461.42	-244.71	-2.29%

EUROPE

DAX	13,103.39	-0.86	-0.01%
FTSE 100	6,211.44	+4.34	+0.07%
CAC 40	5,033.76	-3.36	-0.07%

ASIA

SHANGHAI	3,325.02	-0.09	-0.24%
HANGSENG	25,263.00	+205.06	+0.82%
SET	1,359.65	+2.61	+0.19%
KOSPI	2,214.10	-2.09	-0.09%
JCI	5,145.01	+34.82	+0.68%
NIKKEI	22,751.61	-132.61	-0.58%
ASX	6,038.80	-55.70	-0.91%

COMMODITIES

GOLD	1,884.65	-5.35	-0.28%
WTI OIL	41.14	+0.07	+0.17%
BRENT OIL	43.38	+0.05	+0.12%
COAL	55.40	-0.10	-0.18%
PALM OIL	2800	+55	+2.00%
TINS	17,810.00	-20.00	-0.11%
NICKEL	13,645.00	-40.00	-0.29%

EVENT & ECONOMIC CALENDER



ECONOMIC CALENDER :

INDONESIA

200720 MOTORBIKE SALES (JUN)
240720 LOAN GROWTH (YoY) (JUN)

GLOBAL

200720 JAPAN TRADE BALANCE (JUN)
DEUCTH PPI (MoM) (JUN)
CHINA LOAN PRIME RATE (1Y)
210720 JAPAN INFLATION RATE (YoY) (JUN)
220720 US API CRUDE OIL STOCK
US EXISTING HOME SALES (JUN)
230720 KOREA GDP (Q2)
US JOBLESS CLAIMS
EURO CONSUMER CONFIDENCE (JUN)
240720 UK RETAIL SALES (MoM) (JUN)
EURO MARKIT PMI MANUFACTURING (JUL)
US MARKIT PMI MANUFACTURING (JUL)
US NEW HOME SALES (JUN)

CORPORATE ACTION :

DEVIDEN

200720 STTP RP 76.34 (CUM 2007, PAYMENT 1208)
DUTI RP 300 (CUM 2007, PAYMENT 1308)
210720 KEJU RP 80 (CUM 2107, PAYMENT 2807)
220720 ASBI RP 5.7 (CUM 2207, PAYMENT 1208)
230720 IPCM RP 9.8 (CUM 2307, PAYMENT 1408)
INDS RP 100 (CUM 2307, PAYMENT 1408)
INDF RP 278 (CUM 2307, PAYMENT 1408)
ICBP RP 215 (CUM 2307, PAYMENT 1208)
240720 LSIP RP 15 (CUM 2407, PAYMENT 1208)

RUPS

200720 NFCX MCAS ISAT AMAG
210720 TFAS NIKL FISH DIVA BUKK
220720 SUPR SOTS SHIP SAPX LPLI
230720 WINS VOKS KDSI BUMI BJTM ABDA
240720 UNVR SOCI SMSM RELI RANC PBSA NOBU ITIC INDX

IPO

RIGTH ISSUE

080720 BBKP (NEW 2: OLD 5) RP180 (TRADING PERIOD 1407-2707)

JAKARTA COMPOSITE INDEX



PREVIOUS 23 JULI 2020

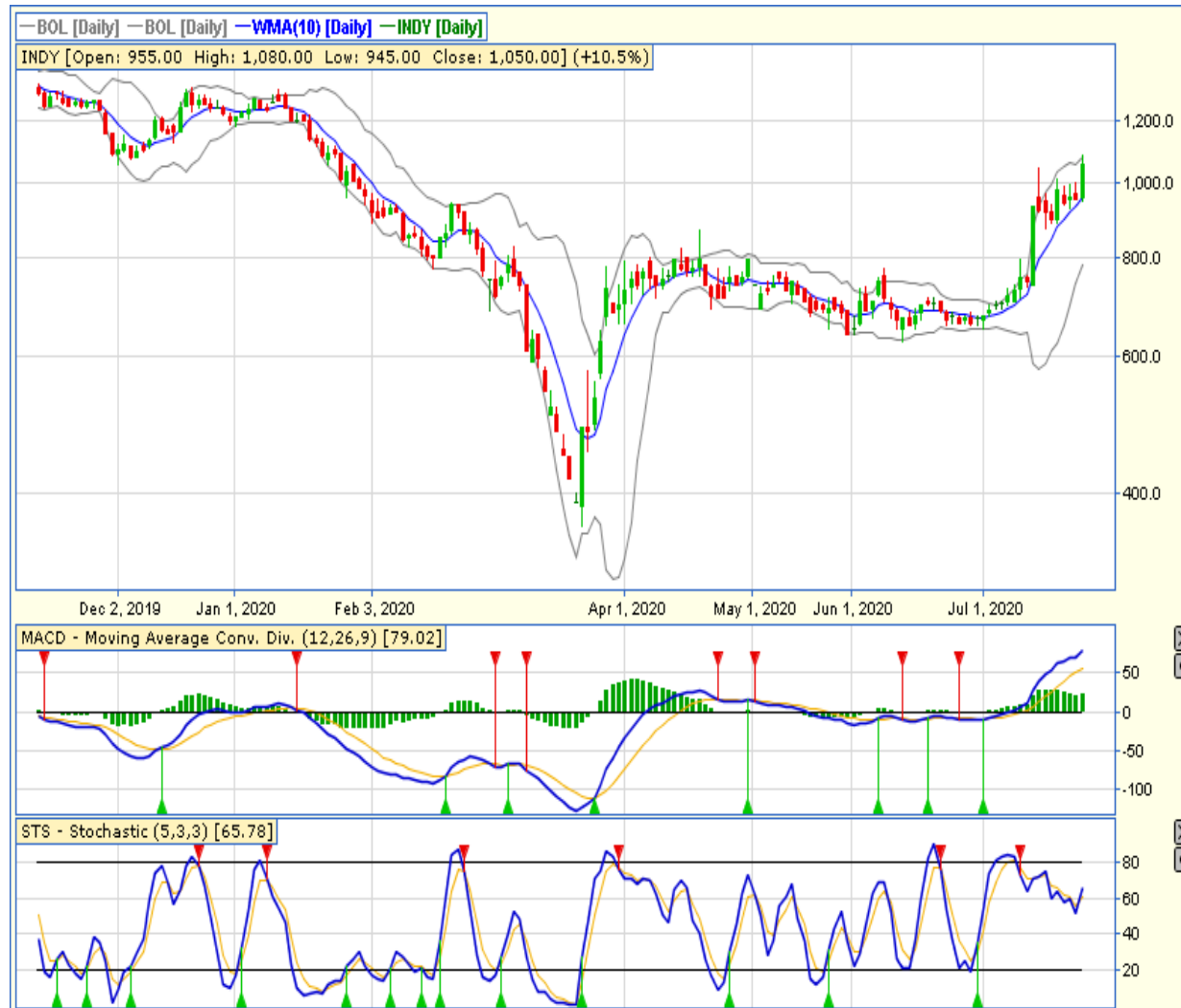
CLOSING	5145.011	+0.681%
TRANSACTION	IDR 9.28 TRILLION	
FOREIGN NETT	IDR 160 BIO (SELL)	

PREDICTION 24 JULI 2020

BEARISH
RANGE 5020-5162

SHOOTING STAR
STOCHASTIC : OVERBOUGHT
MACD : HISTOGRAM POSITIF DAN NETRAL

TECHNICAL RECOMENDATION



INDY – PT INDIKA ENERGY TBK

CLOSING 23/7/2020 RP 1050 (+10.5%)

BUY

TARGET PRICE 1310

STOPLOSS < 1000

BULL FLAG

STOCHASTIC : GOLDEN CROSS

MACD : HISTOGRAM POSITIF DAN UPTREND

TECHNICAL RECOMENDATION



BBNI – PT BANK NEGARA INDONESIA (PERSERO) TBK

CLOSING 23/7/2020 RP 4710 (+0.9%)

BUY
TARGET PRICE 5150
STOPLOSS < 4670

BREAK OUT TRIANGLE
STOCHASTIC : UPTREND
MACD : HISTOGRAM NEGATIF MENGECIL DAN BERSIAP GOLDEN CROSS

TECHNICAL RECOMENDATION



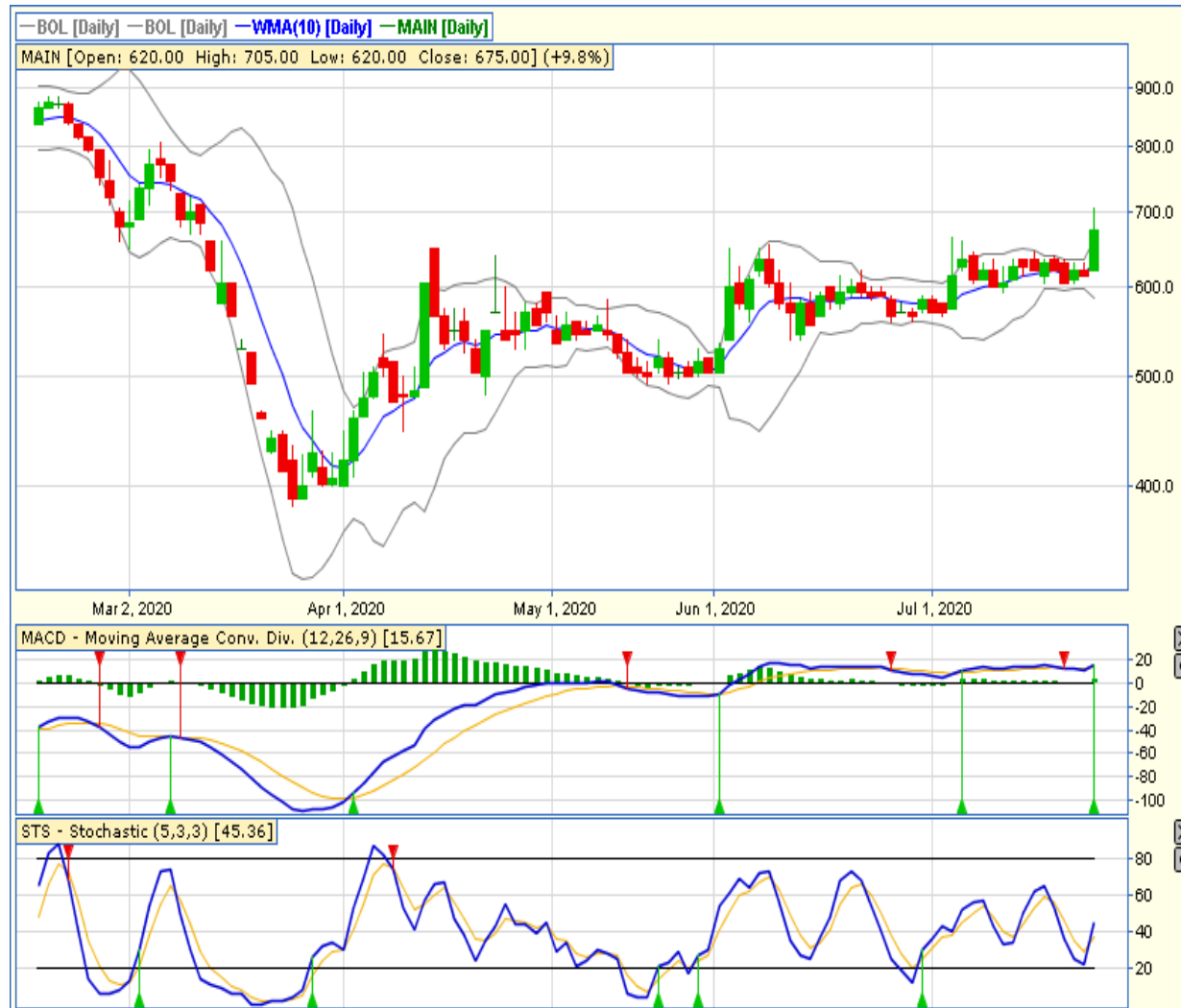
SMBR – PT SEMEN BATURAJA (PERSERO) TBK

CLOSING 23/7/2020 RP 510 (+24.4%)

**SELL ON STRENGTH
TAKE PROFIT 540**

BREAK OUT TRIANGLE
STOCHASTIC : UPTREND
MACD : HISTOGRAM POSITIF DAN UPTREND

TECHNICAL RECOMENDATION



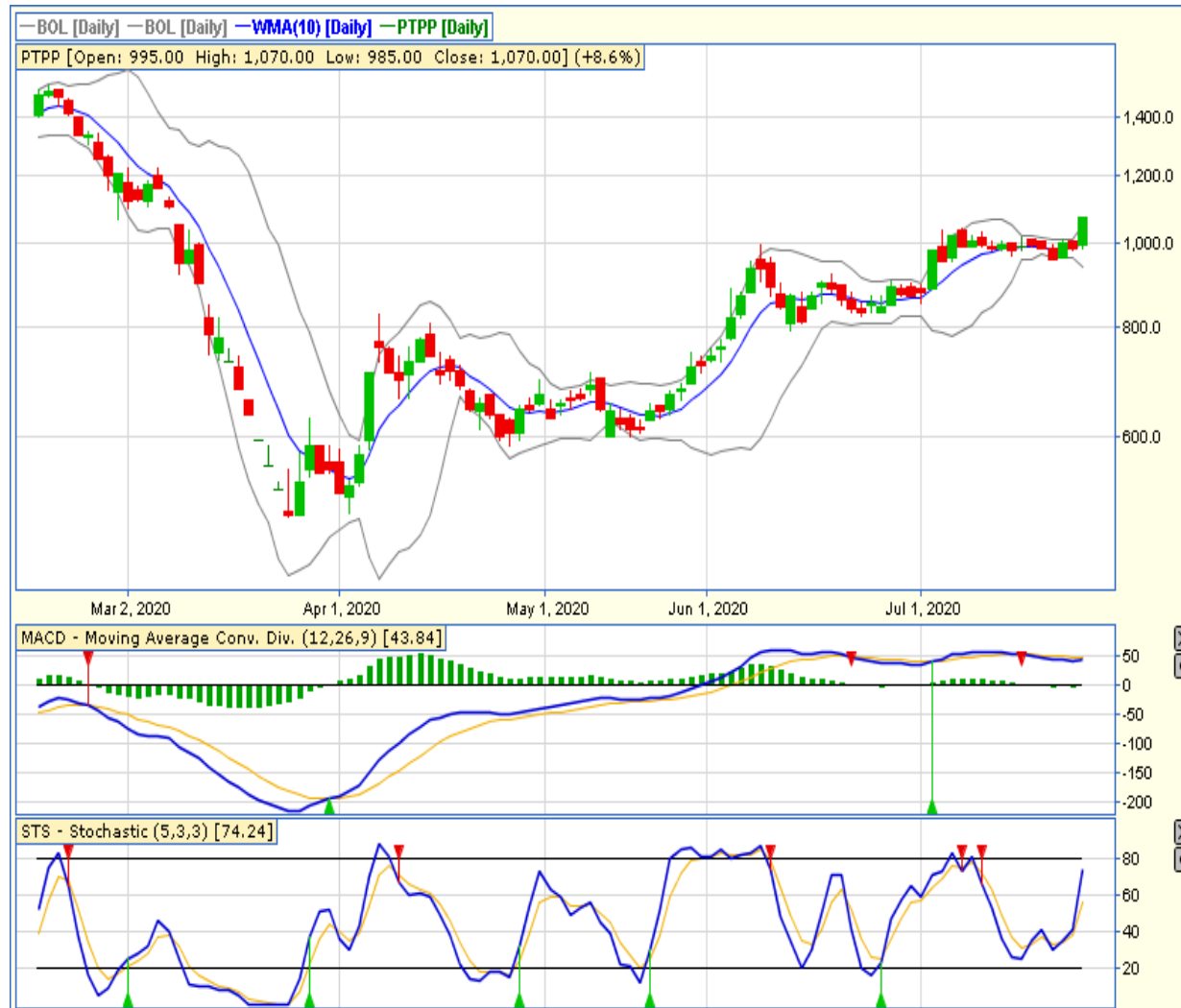
MAIN – PT MALINDO FEEDMIL TBK

CLOSING 23/7/2020 Rp 675 (+9.8%)

**SELL ON STRENGTH
TAKE PROFIT 800**

**BREAK OUT TRIANGLE
STOCHASTIC : GOLDEN CROSS
MACD : HISTOGRAM POSITIF DAN UPTREND**

TECHNICAL RECOMENDATION



PTPP – PT PP (PERSERO) TBK

CLOSING 23/7/2020 RP 1070 (+8.6%)

BUY

TARGET PRICE 1200

STOPLOSS < 1040

BREAK OUT TRIANGLE

STOCHASTIC : UPTREND

MACD : HISTOGRAM POSITIF DAN GOLDEN CROSS

TECHNICAL RECOMENDATION



MNCN – PT MEDIA NUSANTARA CITRA TBK

CLOSING 23/7/2020 RP 900 (+2.3%)

BUY

TARGET PRICE 1000

STOPLOSS < 980

BREAK OUT FALLING WEDGE

STOCHASTIC : GOLDEN CROSS

MACD : HISTOGRAM NEGATIF MENGECECIL DAN

BERSIAP GOLDEN CROSS

RESEARCH TEAM



YULIANA

**RESEARCH ANALYST &
CORPORATE FINANCE**



DIMAS WP PRATAMA, CSA

TECHNICAL ANALYST

EQUITY CAPITAL MARKET TEAM



JESSIE JAMES

HEAD OF EQUITY SALES



PRASETYO NUGROHO

HEAD OF DEALING ROOM



GABRIELLA PRATIWY

HEAD OF ONLINE TRADING